

AZ936

10 AMP LOW PROFILE POWER RELAY

FEATURES

- High power switching (2000 VA)
- High sensitivity, 190 mW pickup
- Low profile (less than .25" height)
- SPST (1 Form A)
- DC coils up to 100 VDC
- UL file E44211, CSA file 720514
- TÜV file BL991234205002



CONTACTS

Arrangement	SPST (1 Form A)
Ratings	Resistive load: Max. switched power: 240 W, 2000 VA Max. switched current: 10 A Max. switched voltage: 250 VAC/110 VDC
Rated Load UL, CSA	10 A at 125 VAC, resistive 8 A at 250/30 VDC, resistive $\frac{1}{10}$ HP 125 VAC $\frac{1}{10}$ HP 250 VAC
TÜV	10 A at 125 VAC, resistive 8 A at 250 VAC, 30 VDC, resistive
Min. Load	5 VDC, 0.1 A
Material	Silver tin oxide
Resistance	< 100 milliohms initially (6 V, 1 A voltage drop method)

COIL

Power At Pickup Voltage (typical)	190 mW
Max. Continuous Dissipation	1.2 W at 20°C (68°F)
Temperature Rise	20°C (36°F) at nominal coil voltage
Temperature	Max. 115°C (239°F)

GENERAL DATA

Life Expectancy Mechanical Electrical	Minimum operations 1 x 10 ⁷ 1 x 10 ⁵ at rated load
Operate Time (typical)	10 ms at nominal coil voltage
Release Time (typical)	2 ms at nominal coil voltage (with no coil suppression)
Dielectric Strength (at sea level for 1 min.)	1500 Vrms coil to contact 1000 Vrms contact to contact
Insulation Resistance	1000 megohms min. at 20°C, 500 VDC, 50% RH
Dropout	Greater than 5% of nominal coil voltage
Ambient Temperature Operating Storage	At nominal coil voltage -40°C (-40°F) to 70°C (158°F) -40°C (-42°F) to 115°C (239°F)
Vibration	0.062" DA at 10–55 Hz
Shock	10 g
Enclosure	P.B.T. polyester
Terminals	Tinned copper alloy, P.C.
Max. Solder Temp.	270°C (518°F)
Max. Solder Time	5 seconds
Max. Solvent Temp.	80°C (176°F)
Max. Immersion Time	30 seconds
Weight	5 grams

NOTES

1. All values at 20°C (68°F).
2. Relay may pull in with less than "Must Operate" value.
3. Specifications subject to change without notice.

ZETTLER electronics

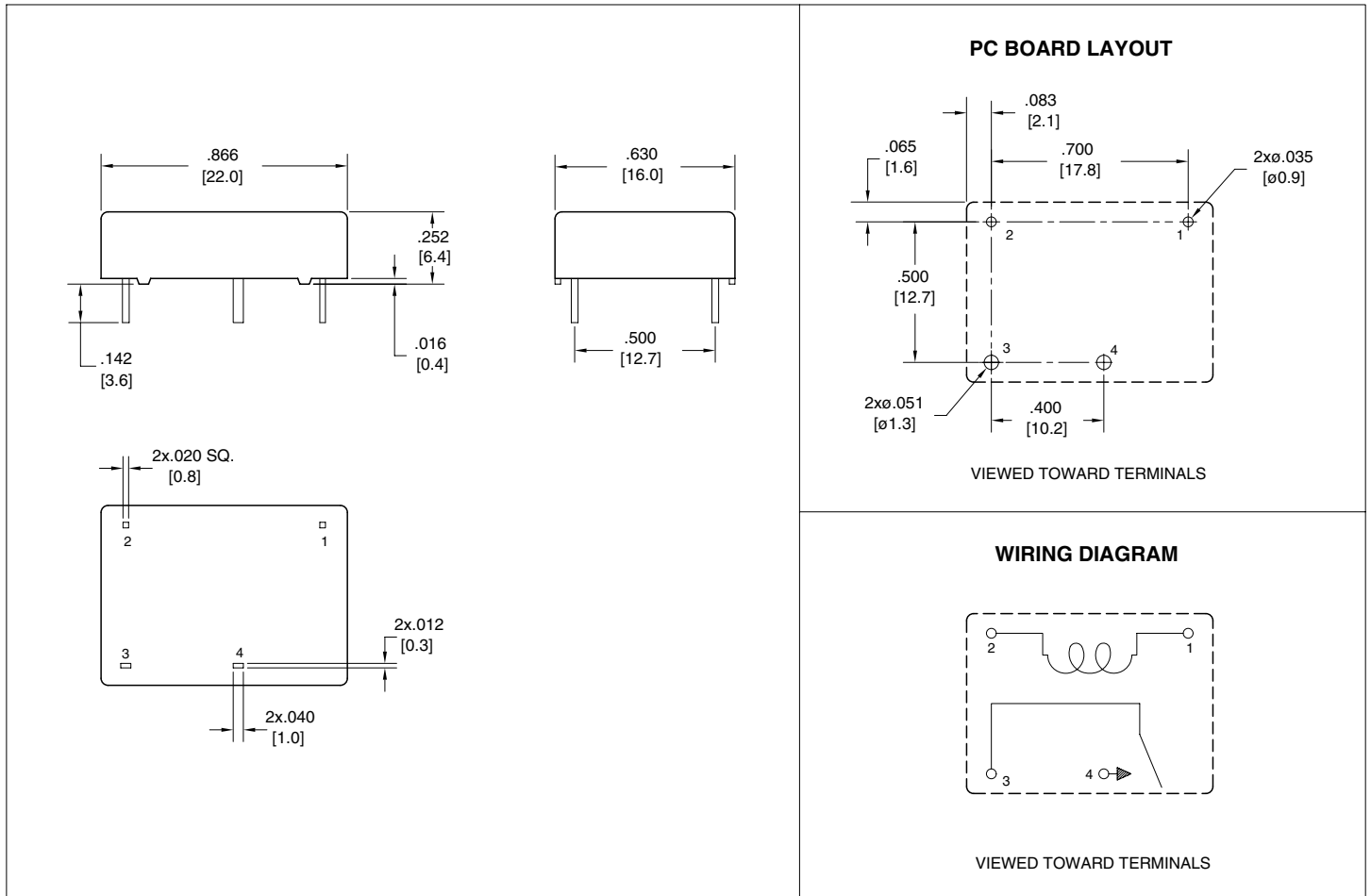
Logistic Design (UK) Limited. Unit 3, Eagle Centre Way, Luton LU4 9US www.zettlerrelay.com sales@zettlerrelay.com
Telephone +44 (0) 1582 599 600 Fax +44 (0) 1582 599 700

AZ936

RELAY ORDERING DATA

COIL SPECIFICATIONS SPST-NO (1 Form A)				ORDER NUMBER	
Nominal Coil VDC	Must Operate VDC	Max. Continuous VDC	Coil Resistance $\pm 10\%$	Unsealed	Sealed
3	2.4	3.9	30	AZ936-1A-3D	AZ936-1A-3DE
5	4.0	6.5	83	AZ936-1A-5D	AZ936-1A-5DE
6	4.8	7.8	120	AZ936-1A-6D	AZ936-1A-6DE
9	7.2	11.7	270	AZ936-1A-9D	AZ936-1A-9DE
12	9.6	15.6	480	AZ936-1A-12D	AZ936-1A-12DE
24	19.2	31.2	1920	AZ936-1A-24D	AZ936-1A-24DE
48	33.6	52.8	4608	AZ936-1A-48D	AZ936-1A-48DE
100	70.0	110.0	20,000	AZ936-1A-100D	AZ936-1A-100DE

MECHANICAL DATA



Dimensions in inches with metric equivalents in parentheses. Tolerance: $\pm 0.010''$

ZETTLER electronics

Logistic Design (UK) Limited. Unit 3, Eagle Centre Way, Luton LU4 9US www.zettlerrelay.com sales@zettlerrelay.com
Telephone +44 (0) 1582 599 600 Fax +44 (0) 1582 599 700

2000-04-21