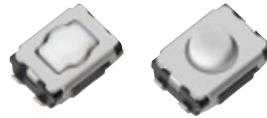


4.7×3.5 mm Square Light Touch Switches

Japan

Type: **EVQP2**

An extra-small-sized switch for creating medium and short push travel and meeting the needs for a high-operating force and long operation life



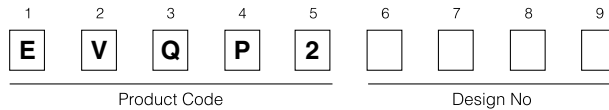
■ Features

- Creating medium and short push travel
- Meeting the need for a high operating force and long operation life
- High mountability by J-bent(4 terminals)

■ Recommended Applications

- Keyless Entry Systems (Automotive)
- Car Audio Equipment
- Audio Visual Equipment

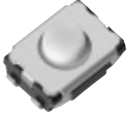
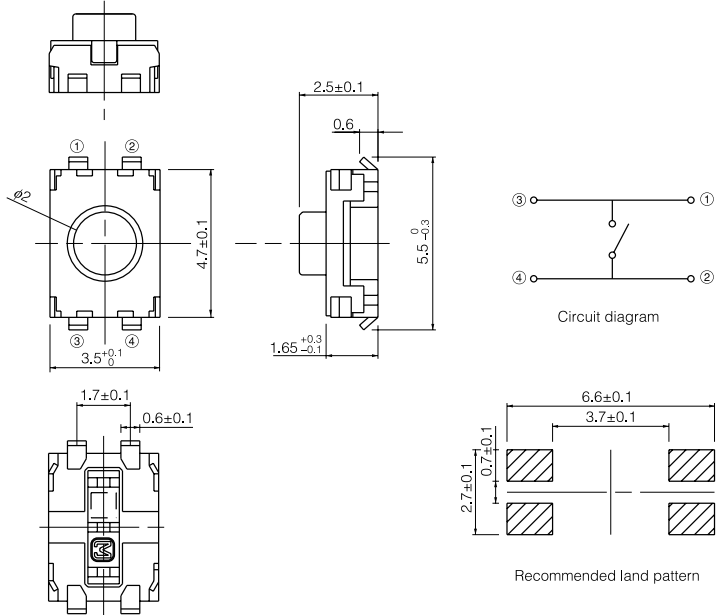
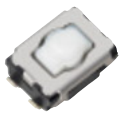
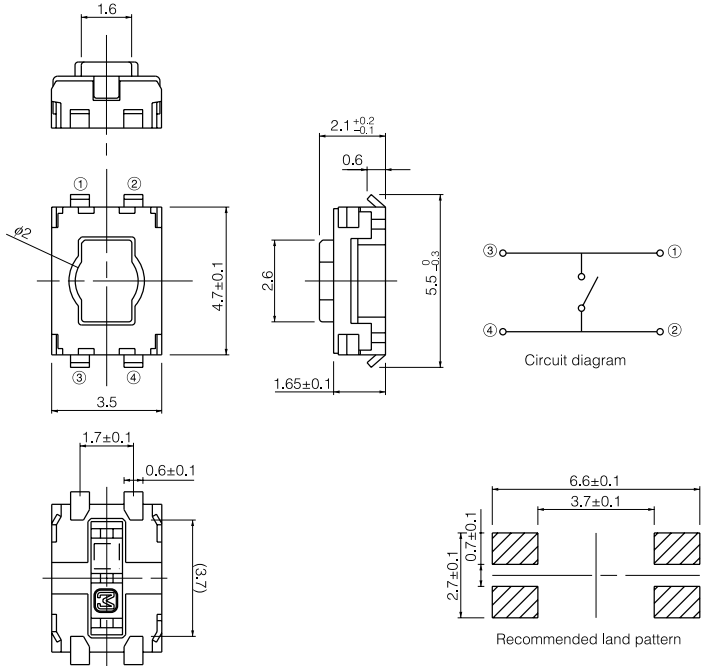
■ Explanation of Part Numbers



■ Major Specifications

		Medium Push Travel	Short Push Travel
Electrical	Power	20 mA 15 V dc max.	
	Contact Resistance	100 mΩ max.	
	Insulation Resistance	100 mΩ min.	
	Dielectric Withstanding Voltage	250 V ac (1 minute)	
	Bouncing	10 ms max.	
Mechanical	Operating Force	2.5 N, 3.5 N 5 N	1 N, 1.6 N, 2.4 N, 3.5 N
	Travel	0.70 mm	0.25 mm
	Push Strength	50 N (1 minute)	
Endurance	Operating Life	2.5 N: 1000000 cycles min.	1 N, 1.6 N: 1000000 cycles min.
		3.5 N: 500000 cycles min.	2.4 N: 500000 cycles min.
		5 N: 200000 cycles min.	3.5 N: 200000 cycles min.
	Operating Temperature	-40 °C to 85 °C	
Storage Temperature	-40 °C to 85 °C (Taping -20 °C to +60 °C)		
Minimum Quantity/Packing Unit		4000 pcs. (Reel Pack)	
Quantity/Case		20000 pcs./case	

■ Dimensions in mm (not to scale)

<p>No. 1</p> <p>Japan</p> <p>Medium push travel With J-bent terminals (With Ground terminal)</p> 	 <p>Technical drawings for No. 1 switch:</p> <ul style="list-style-type: none"> Top view: Dimensions include 4.7 ± 0.1 (width), 3.5 ± 0.1 (terminal spacing), and $\phi 2$ (push button diameter). Side view: Dimensions include 2.5 ± 0.1 (height), 0.6 (terminal height), 5.5 ± 0.3 (total height), and 1.65 ± 0.1 (base width). Bottom view: Dimensions include 1.7 ± 0.1 (terminal width), 0.6 ± 0.1 (terminal offset), and 3.7 (internal width). Circuit diagram: Shows a switch with terminals ①, ②, ③, and ④. Recommended land pattern: Shows a PCB layout with dimensions 6.6 ± 0.1, 3.7 ± 0.1, 2.7 ± 0.1, and 0.7 ± 0.1.
<p>No. 2</p> <p>Japan</p> <p>Short push travel With J-bent terminals (With Ground terminal)</p> 	 <p>Technical drawings for No. 2 switch:</p> <ul style="list-style-type: none"> Top view: Dimensions include 1.6 (width), 4.7 ± 0.1 (width), and 3.5 (terminal spacing). Side view: Dimensions include 2.1 ± 0.2 (height), 0.6 (terminal height), 5.5 ± 0.3 (total height), 2.6 (base height), and 1.65 ± 0.1 (base width). Bottom view: Dimensions include 1.7 ± 0.1 (terminal width), 0.6 ± 0.1 (terminal offset), and 3.7 (internal width). Circuit diagram: Shows a switch with terminals ①, ②, ③, and ④. Recommended land pattern: Shows a PCB layout with dimensions 6.6 ± 0.1, 3.7 ± 0.1, 2.7 ± 0.1, and 0.7 ± 0.1.