

SHARP

GP1A36RA/GP1A36RB

Photointerrupter

OPIC Photointerrupter with Encoder Function

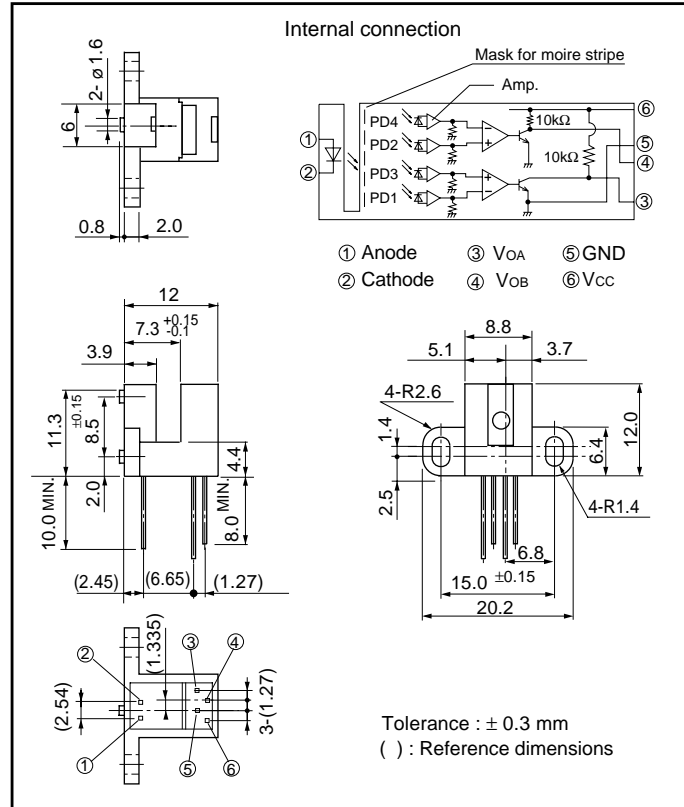
Features

- (1) Linear encoder for reading linear scale
- (2) High sensing accuracy thanks to moire stripe

Applications

- (1) Printers

Outline Dimensions



*OPIC : OPIC (Optical IC) is a trademark of the SHARP Corporation.
An OPIC consists of a light-detecting element and signal-processing circuit integrated onto a single chip.

Absolute Maximum Ratings

(Ta=25°C)

Parameter	Symbol	Rating	Unit
Forward current	IF	65	mA
*1Peak forward current	IFM	1	A
Reverse voltage	VR	6	V
Power dissipation	P	100	mW
Supply voltage	VCC	7	V
Low level output current	IOL	8	mA
Power dissipation	Po	250	mW
Operating temperature	Topr	0 to +70	°C
Storage temperature	Tsg	-40 to +80	°C
*2Soldering temperature	Tsol	260	°C

*1 Pulse width ≤ 100 μs, Duty ratio = 0.01 *2 For 5 s

(Notice)

- In the absence of confirmation by device specification sheets, SHARP takes no responsibility for any defects that may occur in equipment using any SHARP devices shown in catalogs, data books, etc. Contact SHARP in order to obtain the latest device specification sheets before using any SHARP device.
- Specifications are subject to change without notice for improvement.

(Internet)

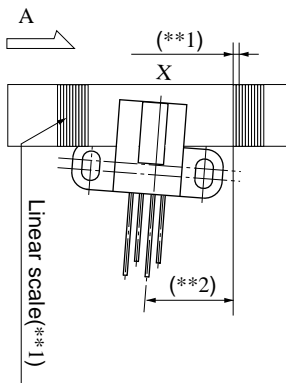
- Data for Sharp's optoelectronic/power devices is provided on internet. (Address <http://www.sharp.co.jp/ecg/>)

Electro-optical Characteristics

(Ta=25°C)

Parameter		Symbol	Conditions	MIN.	TYP.	MAX.	Unit
Input	Forward voltage	V _F	I _F = 30 mA	-	1.2	1.5	V
	Reverse current	I _R	V _R = 3 V	-	-	10	μA
Output	Operating supply voltage	V _{CC}	-	4.5	5.0	5.5	V
	Low level output voltage	V _{OL}	I _{OL} = 8 mA, I _F = 30 mA, V _{CC} = 5 V	-	0.1	0.4	
	High level output voltage	V _{OH}	V _{CC} = 5 V, I _F = 30 mA	4.0	4.9	-	
	Supply current	I _{CC}	V _{CC} = 5 V, I _F = 30 mA	-	5	20	mA
Transfer characteristics	Duty ratio	D _A	I _F = 30 mA, V _{CC} = 5 V	30	50	70	%
		D _B					
	Phase difference	θ _{AB1}	*1 f=70 Hz, Z=0.3 mm ^{+0.2mm}	50	90	130	°
		tr					
	Response time	tf	*1 f=70 Hz, Z=0.3 mm ^{+0.2mm}	-	1.0	2.0	μs
tf							
Response frequency	f _{max}	I _F = 30 mA, V _{CC} = 5 V Z=0.3 mm ^{+0.2mm}	-	-	7	kHz	

*1 GP1A36RB: f = 100 Hz



**1 GP1A36RA: 90 DPI
GP1A36RB: 150 DPI

**2 GP1A36RA: 7.1°
GP1A36RB: 4.28°

Fig.1 Forward Current vs. Ambient Temperature

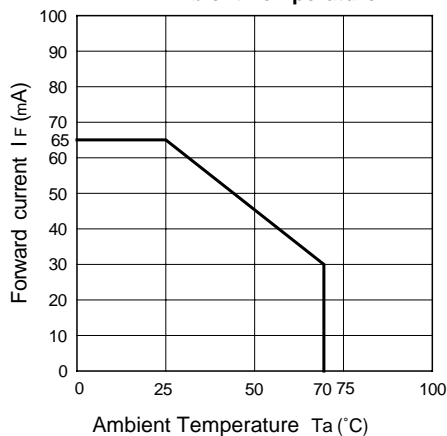
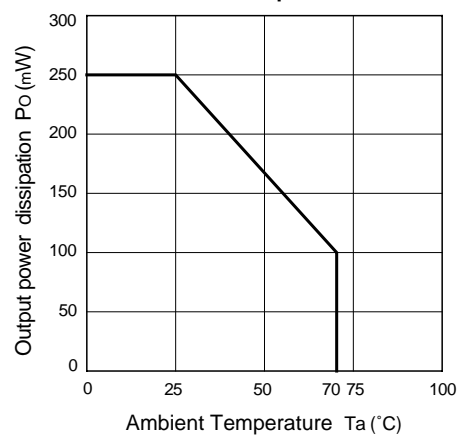


Fig.2 Output Power Dissipation vs. Ambient Temperature



NOTICE

- The circuit application examples in this publication are provided to explain representative applications of SHARP devices and are not intended to guarantee any circuit design or license any intellectual property rights. SHARP takes no responsibility for any problems related to any intellectual property right of a third party resulting from the use of SHARP's devices.
- Contact SHARP in order to obtain the latest device specification sheets before using any SHARP device. SHARP reserves the right to make changes in the specifications, characteristics, data, materials, structure, and other contents described herein at any time without notice in order to improve design or reliability. Manufacturing locations are also subject to change without notice.
- Observe the following points when using any devices in this publication. SHARP takes no responsibility for damage caused by improper use of the devices which does not meet the conditions and absolute maximum ratings to be used specified in the relevant specification sheet nor meet the following conditions:
 - (i) The devices in this publication are designed for use in general electronic equipment designs such as:
 - Personal computers
 - Office automation equipment
 - Telecommunication equipment [terminal]
 - Test and measurement equipment
 - Industrial control
 - Audio visual equipment
 - Consumer electronics
 - (ii) Measures such as fail-safe function and redundant design should be taken to ensure reliability and safety when SHARP devices are used for or in connection with equipment that requires higher reliability such as:
 - Transportation control and safety equipment (i.e., aircraft, trains, automobiles, etc.)
 - Traffic signals
 - Gas leakage sensor breakers
 - Alarm equipment
 - Various safety devices, etc.
 - (iii) SHARP devices shall not be used for or in connection with equipment that requires an extremely high level of reliability and safety such as:
 - Space applications
 - Telecommunication equipment [trunk lines]
 - Nuclear power control equipment
 - Medical and other life support equipment (e.g., scuba).
- Contact a SHARP representative in advance when intending to use SHARP devices for any "specific" applications other than those recommended by SHARP or when it is unclear which category mentioned above controls the intended use.
- If the SHARP devices listed in this publication fall within the scope of strategic products described in the Foreign Exchange and Foreign Trade Control Law of Japan, it is necessary to obtain approval to export such SHARP devices.
- This publication is the proprietary product of SHARP and is copyrighted, with all rights reserved. Under the copyright laws, no part of this publication may be reproduced or transmitted in any form or by any means, electronic or mechanical, for any purpose, in whole or in part, without the express written permission of SHARP. Express written permission is also required before any use of this publication may be made by a third party.
- Contact and consult with a SHARP representative if there are any questions about the contents of this publication.